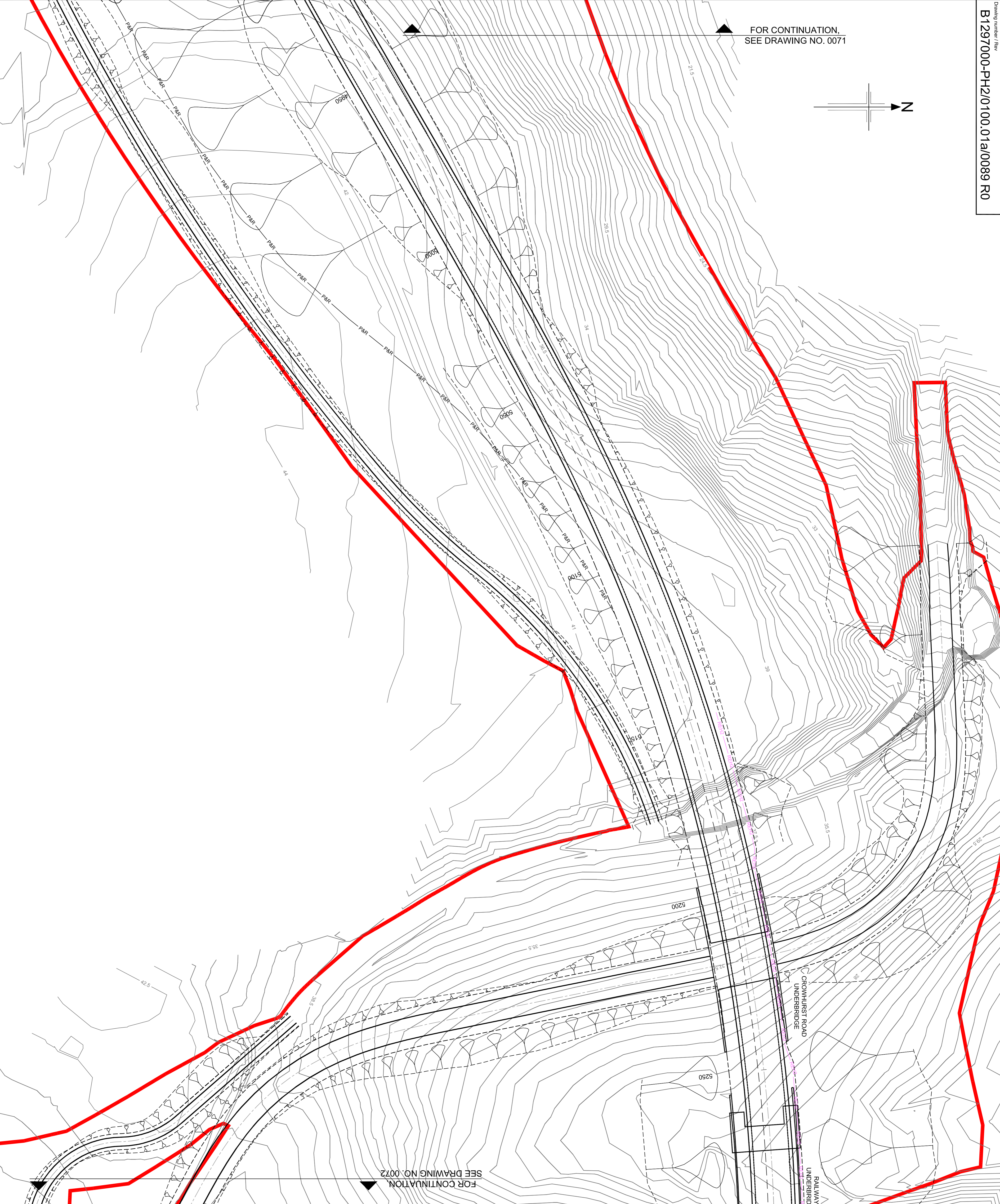
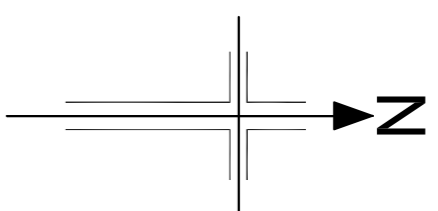


FOR CONTINUATION,
 SEE DRAWING NO. 0071



FOR CONTINUATION
 SEE DRAWING NO. 0072

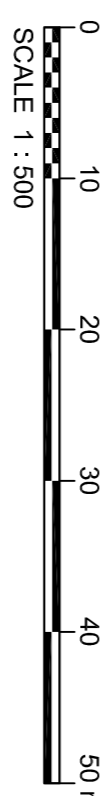
NOTES

1. Greenways and access track contours are not included in the proposed contour model.
2. For clarity structure outline shown only.
3. The scheme plan shows the engineered earthworks. Please note that in some areas the landscape contours re-profile the engineered earthworks (i.e. form the landscape bunds).

KEY

- Existing Contours @ 0.5m spacing
- Proposed Landscaping Contours @ 0.5m spacing
- ANB Absorptive Noise Barrier (Height - 1.8m)
- REN Reflective Noise Barrier (Height - 1.8m)
- REN2 Reflective Noise Barrier (Height - 1.5m)
- Scheme Extents

Reproduction from the Ordnance Survey Map with the permission of the controller of Her Majesty's Stationery Office Crown Copyright reserved Licence No. AL 100017326



Rev	Rev. Date	INITIALS/ISSUE	LC	RNS	RNS	SSG
1	12/02/2013	INITIAL ISSUE				

Client: **HOCHTIEF** **TRAVLER** **WILSON**

Employer: **JACOBS**

Simpson House, 6 Cherry Orchard Road, Gorton, Surrey, CR8 6BE
 Tel: +44(0)2038 666 8212 Fax: +44(0)2038 681 2459
 www.jacobs.com

Project: **BEXHILL TO HASTINGS LINK ROAD**

Drawing title: **PLANNING CONDITION 14 EXISTING & PROPOSED CONTOURS SHEET 19 OF 30**

Drawing status:	ISSUE FOR REVIEW
Scale:	1:500 @ A1
Jacobs No.:	B1297000-PH2
Client no.:	DO NOT SCALE
Drawing number:	B1297000-PH2/0100.01a/0089 R0
Rev:	R0

This drawing is not to be used in whole or part other than for the intended purpose and project as defined on this drawing. Refer to the contract for full terms and conditions.